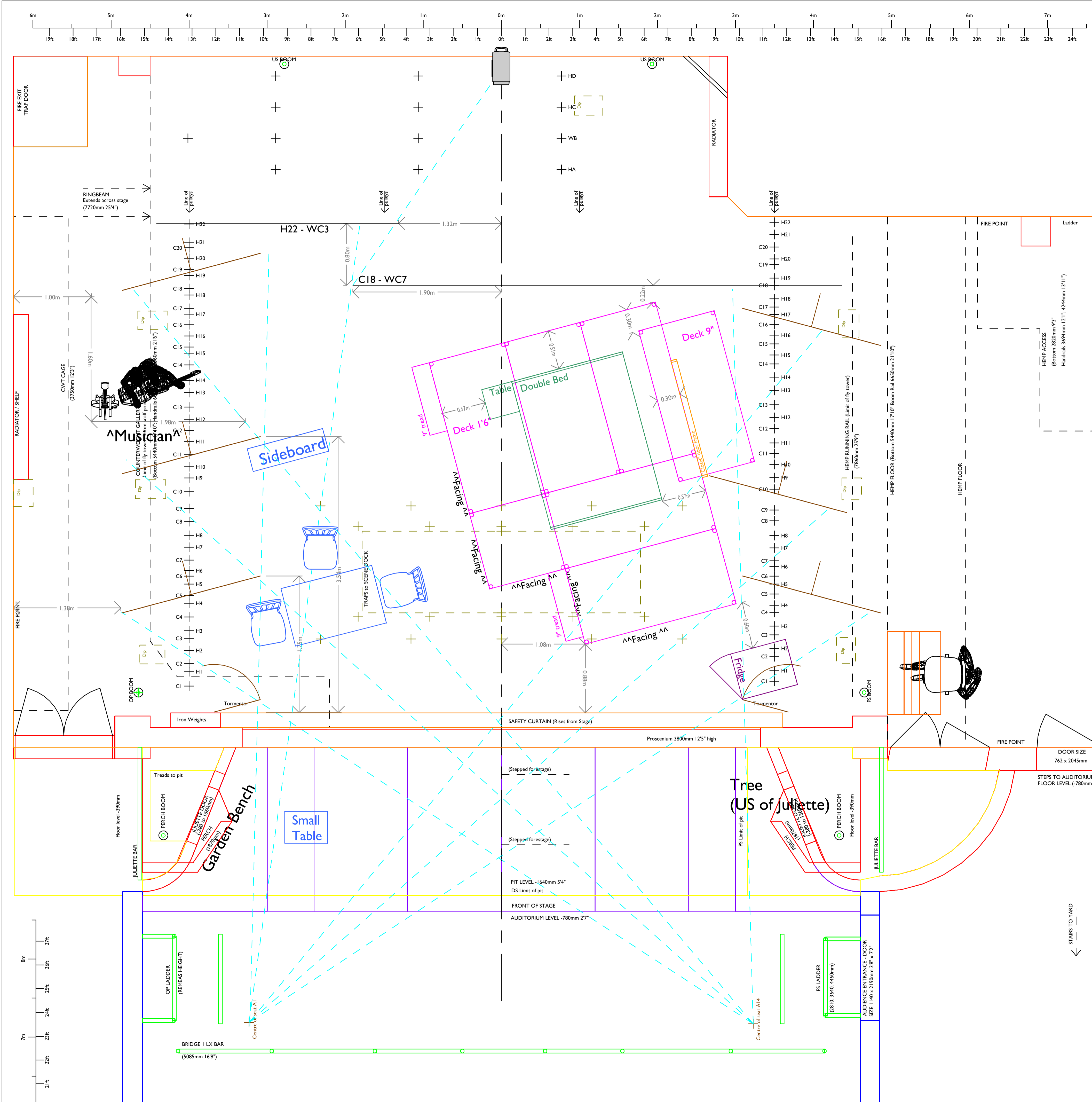


PRODUCTION Lovesong	DATES 25-29 July 2023
COMPANY Combined Actors	
DIRECTOR Sean Baker	DESIGNER Sarah Deboys
LIGHTING DESIGNER Dominic Plunkett	DRAWN Eddy Langley
	DATE 14/07/2023

ADC CAD Model maintained by Eddy Langley - <http://www.eddylangley.net/cad/>



Stuff	Where
2 x 9" treads	ADC stock
6 x 9" deck legs	Custom scuff
22 x 18" deck legs (bring the box)	Scene dock
Furniture	
Double bed	Scene dock
Double mattress	Scene dock
Bedside table	Sean
Table	Scene dock
Chairs x 3	Scene dock
Sideboard	Scene dock
Small Table	?Andrew?
Garden bench	Scene dock
Constructed items	
1 x tree, leaves	George
Peaches	Ali
1 x fridge	eBay
1 x 5.5m cyc strainer	Scene dock
Deck facing 3x1m 2x2m	Scene dock
Closet door frame 1.5m x 6'6" + 9"	Scene dock
Sundries	
Screws	
Sash cord	
Fishing line	

Tab Rack

NOTES

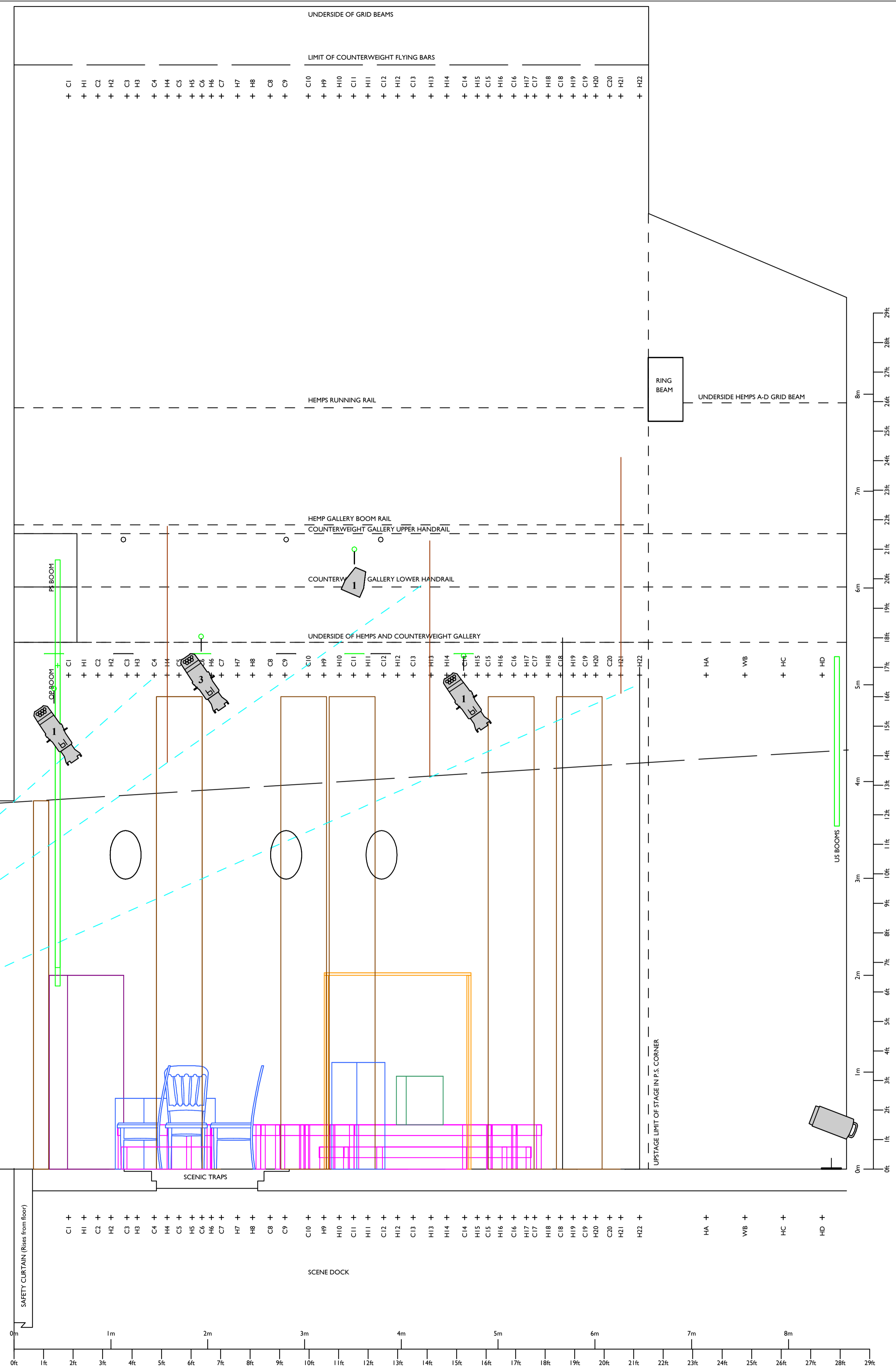
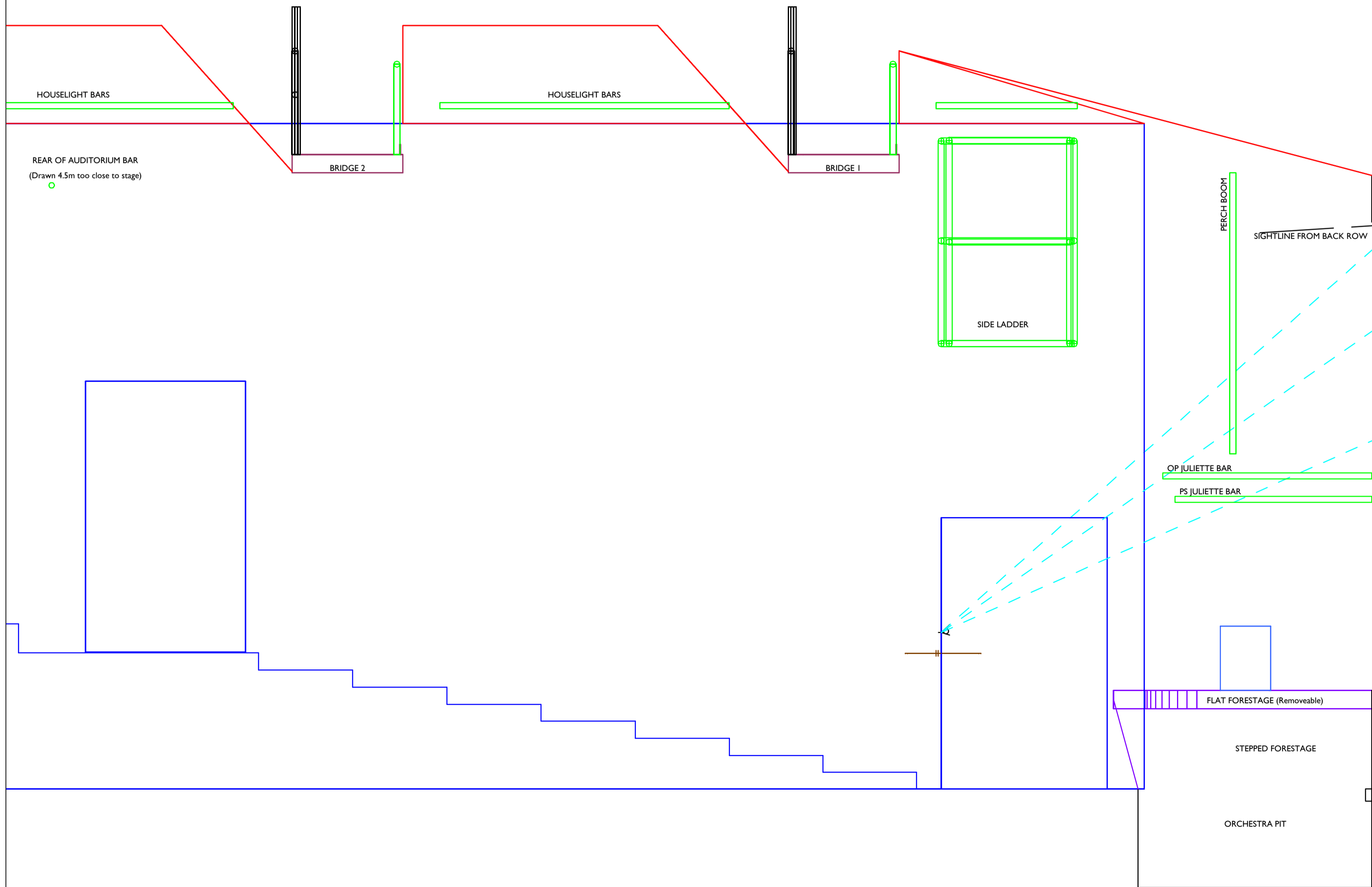
<p>AUDITORIUM Size 13.6m (44'6") x 9.2m (30') Front half each row stepped 1 in 5.5 Back half each row stepped 1 in 3.3</p>	<p>FORESTAGE Two 2', four 4' (interchangeable) and 2 curved sections, can be lowered by 0.57m (1'10") max. Steps available with 0.17m (6.75") risers.</p>
<p>GRID Height 12m (39'4") to underside Maximum flying height: 11.4m (37'5") Hemps A-D flying height 7.75m (25'5")</p>	<p>GET IN DOORS AND TRAPS Get-in doors 1.14m x 2.19m (3'8" x 7'2") or 0.76m x 2.04m (2'6" x 6'8"). Staircase should be checked if large pieces of scenery are to be used Traps to scene dock below stage, aperture 3.55m x 1.03m (11'7" x 3'4")</p>
<p>STAGE SIZE Proscenium Arch Height 3.8m (12'5") Proscenium Arch Width 6.67m (21'10") Maximum Stage Depth 11.1m (36'5")</p>	<p>ORCHESTRA PIT Depth 1.6m (5'3") below stage Depth 0.8m (2'9") below auditorium Useful width 1.55m (5'1")</p>

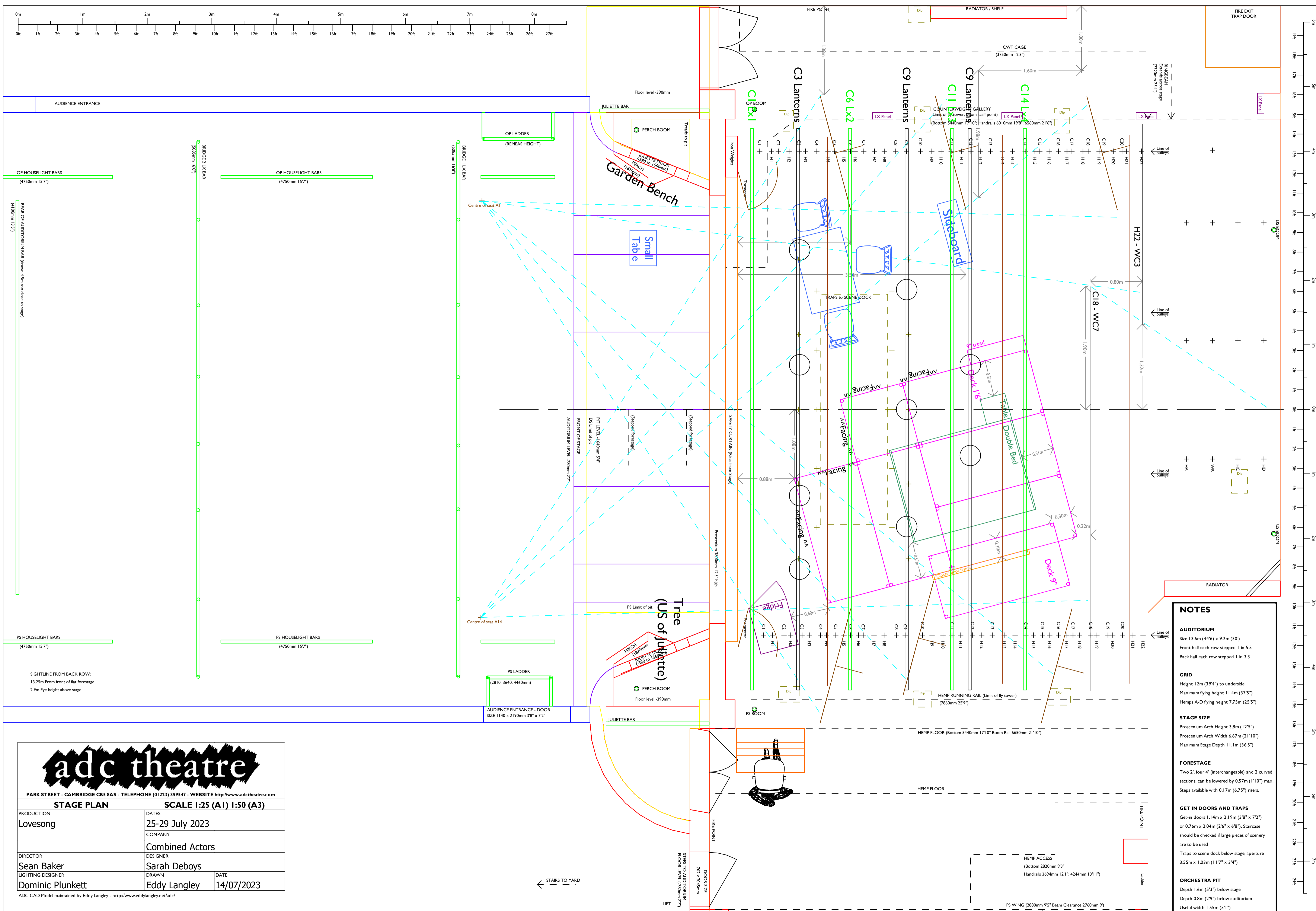
STAGE SECTION		SCALE 1:25 (A1) 1:50 (A3)	
PRODUCTION	LOVESONG	DATES	25-29 July 2023
DIRECTOR	Sean Baker	DESIGNER	Sarah Deboys
LIGHTING DESIGNER	Dominic Plunkett	DRAWN	Eddy Langley
		DATE	14/07/2023

ADC CAD Model maintained by Eddy Langley - <http://www.eddylangley.net/adcl>

Bar	Item	Trim	Lx(kg)	Weights
C1	Lx1		19	4
C3	Lanterns			
H4	Border	6.64		
C6	Lx2	5.50	58	12
C9	Lanterns			
C11	Lx3	6.40	30	6
C12	Lanterns			
H13	Border	6.50		
C14	Lx4 cyc floods	5.30	44	9
C18	WC7+barrel			7
C20	Blinder			11
or				
H21	Border	7.35		
H22	WC3			

**Chinese Lanterns on 2.8-4.8m fishing line;
cwt bars >=6.5m height at IN dead.**





NOTES

AUDITORIUM
 Size 13.6m (44'6") x 9.2m (30')
 Front half each row stepped 1 in 5.5
 Back half each row stepped 1 in 3.3

GRID
 Height 12m (39'4") to underside
 Maximum flying height 11.4m (37'5")
 Hemps A-D flying height 7.75m (25'5")

STAGE SIZE
 Proscenium Arch Height 3.8m (12'5")
 Proscenium Arch Width 6.67m (21'10")
 Maximum Stage Depth 11.1m (36'5")

FORESTAGE
 Two 2', four 4' (interchangeable) and 2 curved sections, can be lowered by 0.57m (1'10") max.
 Steps available with 0.17m (6.75") risers.

GET IN DOORS AND TRAPS
 Get-in doors 1.14m x 2.19m (3'8" x 7'2") or 0.76m x 2.04m (2'6" x 6'8"). Staircase should be checked if large pieces of scenery are to be used
 Traps to scene dock below stage, aperture 3.55m x 1.03m (11'7" x 3'4")

ORCHESTRA PIT
 Depth 1.6m (5'3") below stage
 Depth 0.8m (2'9") below auditorium
 Useful width 1.55m (5'1")

adc theatre

PARK STREET - CAMBRIDGE CB5 8AS - TELEPHONE (01223) 359547 - WEBSITE <http://www.adc.theatre.com>

STAGE PLAN		SCALE 1:25 (A1) 1:50 (A3)	
PRODUCTION Lovesong	DATES 25-29 July 2023	COMPANY Combined Actors	
DIRECTOR Sean Baker	DESIGNER Sarah Deboys	DATE 14/07/2023	
LIGHTING DESIGNER Dominic Plunkett	DRAWN Eddy Langley		

ADC CAD Model maintained by Eddy Langley - <http://www.eddylangley.net/adcl>