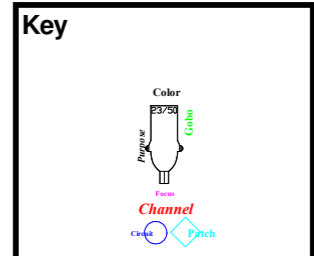


Symbol	Name	Count	Lamp	Fixture Options
	Strand Lighting Cadenza 9/15	1	CP/43 240V	
	613SX	6	T/19 230V	
	614SX	4	T/29 230V	
	Strand Patt 23N	2	T/17 240V	
	Minuette 17°<->36° Profile	4	T/27 230V	
	Strand Lighting SL	2	GKV 230V	
	Strand Lighting SL 23/50	3	GKV 230V	
	Pacific 23°<->50° Zoom	2	GKV 230V	
	Starlette 7°<->38° PC	6	T/19 230V	
	Strand Patt 243BP	10	CP/41 230V	
	Starlette 6°<->57° Fresnel	23	T/19 230V	
	Minuette 18°<->57° Fresnel	10	T/25 230V	
	Spectra Cyc 200	6	LED	Personality: 608
	PAR 64	17	CP/62 240V - MFL	
	PAR 64	1	CP/61 240V - NSP	
	PAR 64	10	CP/60 240V - VNSP	
	Atomic 3000	1	XOP 7-OF	Channels: 4; Lamp: High; Operation: Strobe
	Mirror Ball 16 Inch	1	BTR	
	Small Video Projector			
	Hui Cyc Single			



Channel	DMX	Item
103	103	Mirror ball rotator
196		Camelot sign
197		Castle lights
198		Star cloth
199		Followspot
200	93	Houselights
411	411	SpectraCyc P08
412	421	
413	431	
414	441	
415	451	
416	461	
504	504	Strobe 1_1111_1000
		4ch HiPwr 0001_00
508	508	Hazer
121-126		US cwts soca
127-132		DS cwts soca
133-138		US hems soca
139-144		DS hems soca

LX Ladders directly under gallery; must clear 3.6m rabbit
 Prosc booms lowest lantern body centred 2.4m up
 See table for SpectraCyc+Atomic+Hazer DMX + Personality
 LX PS Ladder 1.27 wide x 1.68 tall
 LX OP Ladder 1.00 wide x 1.74 tall

Gobos By Position 06/25/2016 LX PLAN

Venue: ADC Theatre Show: Spamalot
 Designer: Eddy Langley / Rob Loxley Assistant:

Position	Gobo	Type	Count
C1-IWB1	R7119	B Size Gobo Holder	2
C11-IWB3	R7642	B Size Gobo Holder	2
C1-IWB1	R7969	B Size Gobo Holder	2

adc theatre
 PARK STREET - CAMBRIDGE CB5 8AS - TELEPHONE (01223) 359547 - WEBSITE <http://www.adctheatre.com>

LX PLAN SCALE 1:25 (A1) 1:50 (A3)

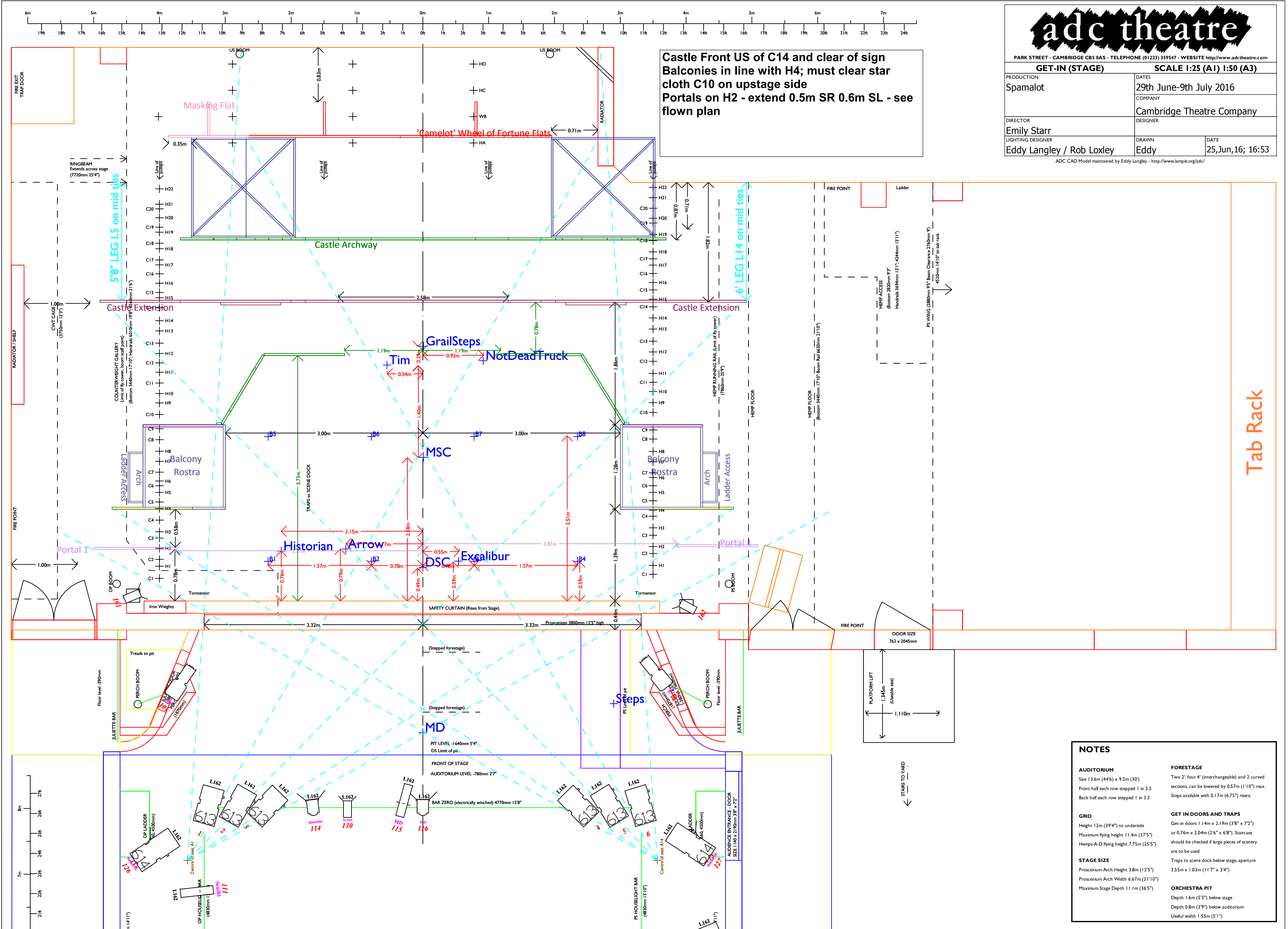
PRODUCTION Spamalot	DATES 29th June-9th July 2016
DIRECTOR Emily Starr	COMPANY Cambridge Theatre Company
LIGHTING DESIGNER Eddy Langley / Rob Loxley	DESIGNER Eddy
	DATE 25,Jun,16; 16:53

ADC CAD Model maintained by Eddy Langley - <http://www.lampie.org/ad/>

GET-IN (STAGE)		SCALE 1:25 (A1) 1:50 (A3)	
PRODUCTION Spamalot	DATES 29th June-9th July 2016	COMPANY Cambridge Theatre Company	
DIRECTOR Emily Starr	DESIGNER Eddy	DATE 25,Jun,16; 16:53	

ADC CAD Model maintained by Eddy Langley - <http://www.lampie.org/adcl>

Castle Front US of C14 and clear of sign
Balconies in line with H4; must clear star
cloth C10 on upstage side
Portals on H2 - extend 0.5m SR 0.6m SL - see
flow plan



NOTES

AUDITORIUM
Size 13.6m (44'6") x 9.2m (30')
Front half each row stepped 1 in 5.5
Back half each row stepped 1 in 3.3

FORESTAGE
Two 2'; four 4' (interchangeable) and 2 curved sections, can be lowered by 0.57m (1'10") max. Steps available with 0.17m (6.75") risers.

GRID
Height 12m (39'4") to underside
Maximum flying height 11.4m (37'5")
or 0.76m x 2.04m (2'6" x 6'8"). Staircase should be checked if large pieces of scenery are to be used

GET IN DOORS AND TRAPS
Get-in doors 1.14m x 2.19m (3'8" x 7'2") or 0.76m x 2.04m (2'6" x 6'8"). Staircase should be checked if large pieces of scenery are to be used

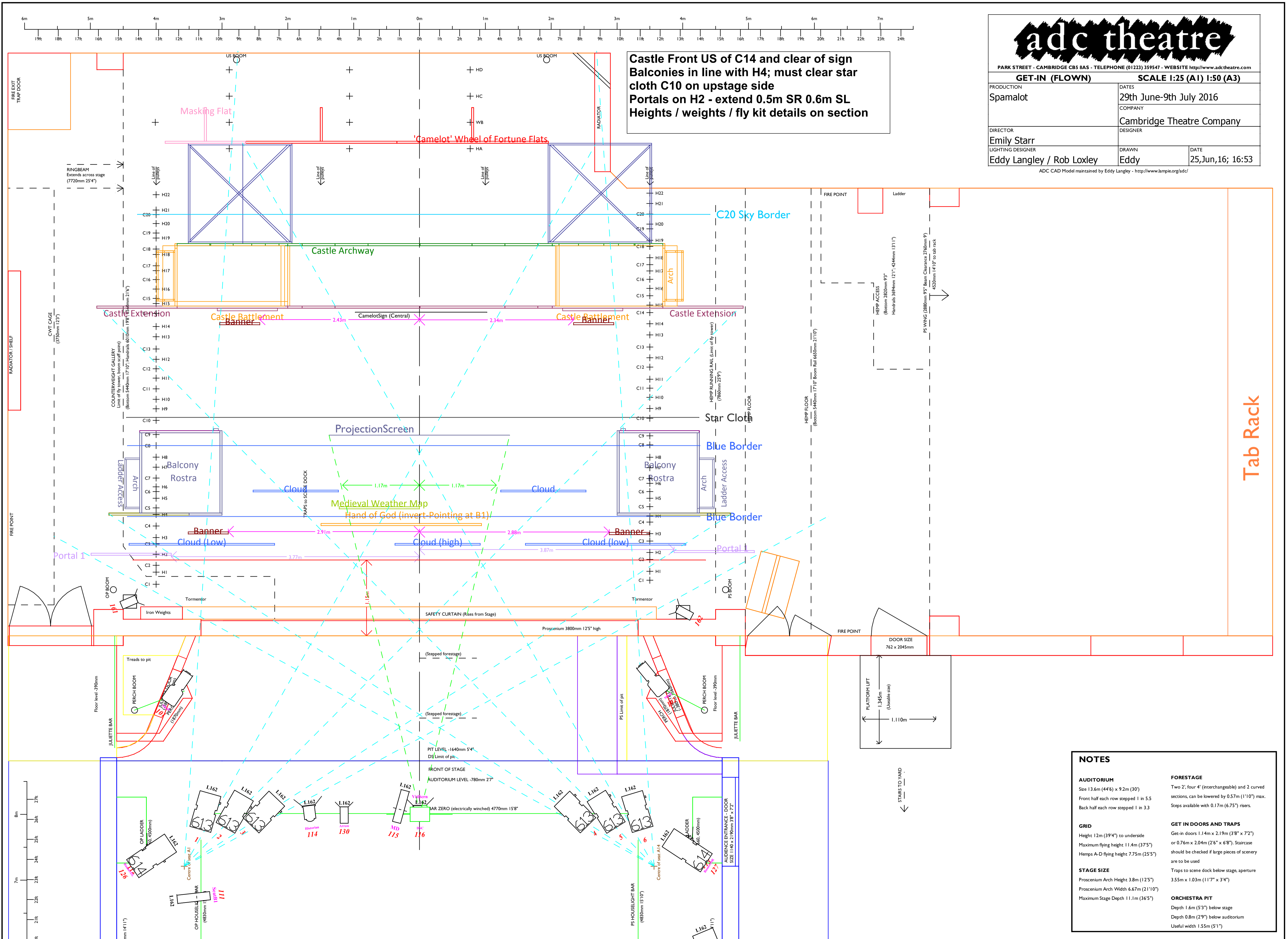
STAGE SIZE
Proscenium Arch Height 3.8m (12'5")
Proscenium Arch Width 6.67m (21'10")
Maximum Stage Depth 11.1m (36'5")

ORCHESTRA PIT
Depth 1.6m (5'3") below stage
Depth 0.8m (2'9") below auditorium
Useful width 1.55m (5'1")

GET-IN (FLOWN)		SCALE 1:25 (A1) 1:50 (A3)	
PRODUCTION	Spamalot	DATES	29th June-9th July 2016
DIRECTOR	Emily Starr	COMPANY	Cambridge Theatre Company
LIGHTING DESIGNER	Eddy Langley / Rob Loxley	DESIGNER	CAMBRIDGE
		DRAWN	Eddy
		DATE	25,Jun,16; 16:53

ADC CAD Model maintained by Eddy Langley - <http://www.lampie.org/adc/>

Castle Front US of C14 and clear of sign
Balconies in line with H4; must clear star
cloth C10 on upstage side
Portals on H2 - extend 0.5m SR 0.6m SL
Heights / weights / fly kit details on section

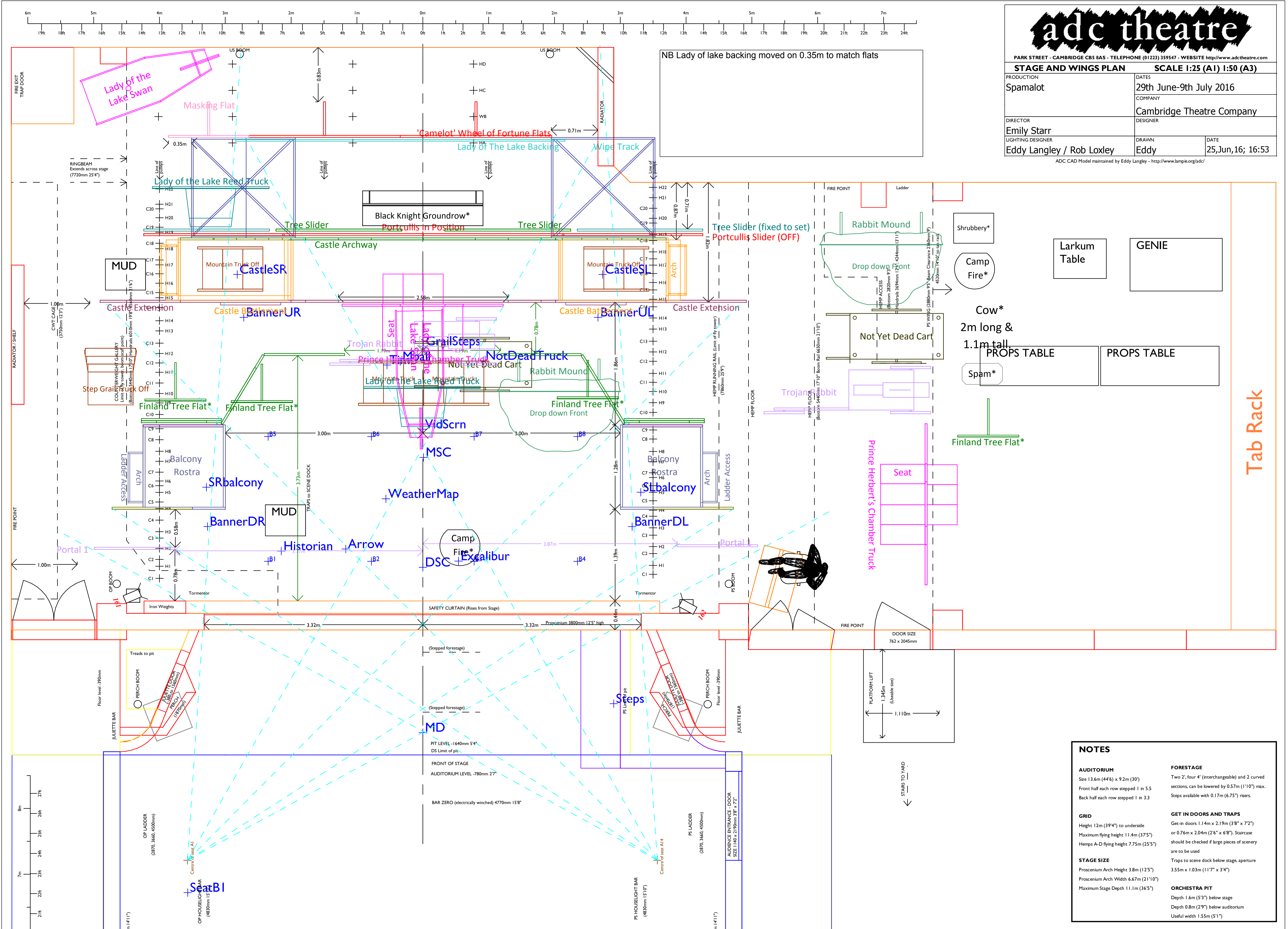


NOTES

<p>AUDITORIUM Size 13.6m (44'6") x 9.2m (30') Front half each row stepped 1 in 5.5 Back half each row stepped 1 in 3.3</p> <p>GRID Height 12m (39'4") to underside Maximum flying height 11.4m (37'5") Hemps A-D flying height 7.75m (25'5")</p> <p>STAGE SIZE Proscenium Arch Height 3.8m (12'5") Proscenium Arch Width 6.67m (21'10") Maximum Stage Depth 11.1m (36'5")</p>	<p>FORESTAGE Two 2'; four 4" (interchangeable) and 2 curved sections, can be lowered by 0.57m (1'10") max. Steps available with 0.17m (6.75") risers.</p> <p>GET IN DOORS AND TRAPS Get-in doors 1.14m x 2.19m (3'8" x 7'2") or 0.76m x 2.04m (2'6" x 6'8"). Staircase should be checked if large pieces of scenery are to be used Traps to scene dock below stage, aperture 3.55m x 1.03m (11'7" x 3'4")</p> <p>ORCHESTRA PIT Depth 1.6m (5'3") below stage Depth 0.8m (2'9") below auditorium Useful width 1.55m (5'1")</p>
--	--

PRODUCTION Spamalot	DATES 29th June-9th July 2016
DIRECTOR Emily Starr	COMPANY Cambridge Theatre Company
LIGHTING DESIGNER Eddy Langley / Rob Loxley	DESIGNER Eddy
	DATE 25 Jun, 16; 16:53

ADC CAD Model maintained by Eddy Langley - <http://www.lampie.org/adc/>



NOTES

AUDITORIUM Size 13.6m (44'6") x 9.2m (30') Front half each row stepped 1 in 5.5 Back half each row stepped 1 in 3.3	FORESTAGE Two 2', four 4" (interchangeable) and 2 curved sections, can be lowered by 0.57m (1'10") max. Steps available with 0.17m (6.75") risers.
GRID Height 12m (39'4") to underside Maximum flying height 11.4m (37'5") Hemps A-D flying height 7.75m (25'5")	GET IN DOORS AND TRAPS Get-in doors 1.14m x 2.19m (3'8" x 7'2") or 0.76m x 2.04m (2'6" x 6'8"). Staircase should be checked if large pieces of scenery are to be used
STAGE SIZE Proscenium Arch Height 3.8m (12'5") Proscenium Arch Width 6.67m (21'10") Maximum Stage Depth 11.1m (36'5")	ORCHESTRA PIT Depth 1.6m (5'3") below stage Depth 0.8m (2'9") below auditorium Useful width 1.55m (5'1")



PARK STREET - CAMBRIDGE CB5 8AS - TELEPHONE (01223) 359547 - WEBSITE <http://www.adctheatre.com>

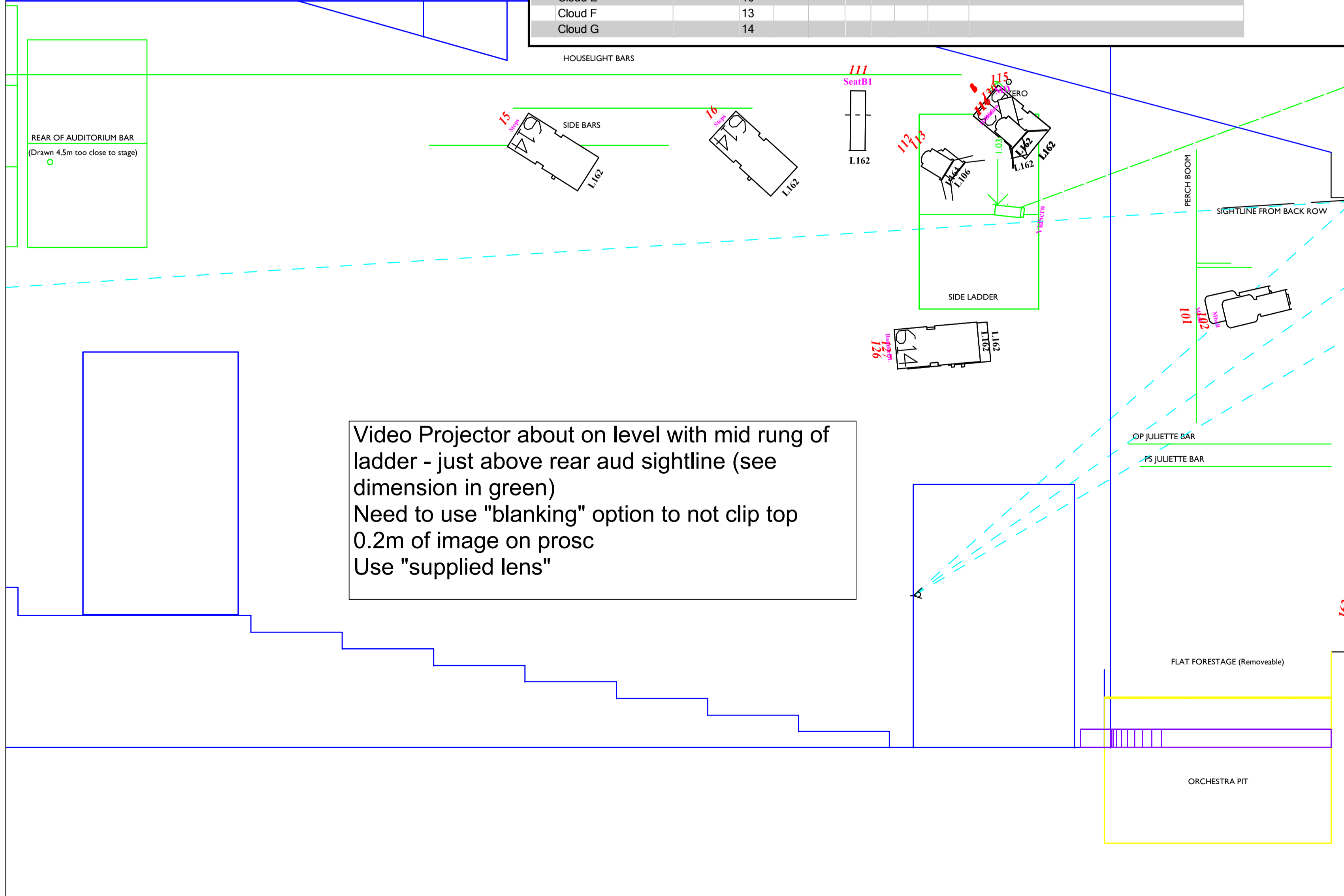
STAGE SECTION		SCALE 1:25 (A1) 1:50 (A3)	
PRODUCTION	Spamalot	DATES	29th June-9th July 2016
DIRECTOR	Emily Starr	COMPANY	Cambridge Theatre Company
LIGHTING DESIGNER	Eddy Langley / Rob Loxley	DESIGNER	Eddy
		DATE	25,Jun,16; 16:53

ADC CAD Model maintained by Eddy Langley - <http://www.lampie.org/adc/>

Metric	Imp Qty
1.22	4 12
2.44	8 2
3.66	12 11
4.88	16 8
5.49	18
BarHang	18
BoltHang	14

Plus 2x 8' for ladder safeties

Bar Item	Bar Cwts	Wght kg	Cwt inc bars	Dead (m)	Len	Qty	Bolty	Fabric	Notes
C1	IWB1	7	136	34	4.96				
H1									
C2	TABS								
H2	Portal1	Y			16	4	4		
C3	3 clouds				12	6	6		Mid cloud 2' higher than edges. Lowest in 3.07,3.67m
H3	Banners1	Y			4	4	4		Short (deck leg) drift bars 4' below hemp
C4	Hand of God		10	2	16	2	2		In to touch top of portals
H4	Blue Border	Y							
C5	Medieval weather map		20	4	16	2	2		
H5									
C6	2 clouds				12	4	4		Not in centre - see plan. Lowest in to 3.48m
H6									
C7	IWB2	7	72	21	5.94				BrailUS
H7									
H8									
C8	Blue Border	2							In to touch top of portals
C9	Projection screen (12')				4	2	4		Bot Edge 2.16m; bar clears 14' portals
C10	Starcloth	2							Must clear portal3
H9									
H10									
C11	IWB3	7	70	21	6				
H11									
C12	MIRROR BALL		2		12	1			Ball bisects rear aud sightline
H12									
C13	IWB4	7	143	36	6.25				
H13									
H14	Banners2	Y			4	4	4		On short (deck leg) drift bars 4' below hemp
C14	CAMELOT Sign		2		8+4	2	2		Fly before building set. Might not clear
H15									
C15									
H16									
C16	GashLx		64	13	7.08				
H17									
C17									
H18									
C18									
H19									
C19									
H20									Fly to just mask bot edge
C20	Sky Border	NO	14	3					
H21									
H22	GashLx	Y	28		5.03				
	Cloud A		2.6						
	Cloud B		3.6						
	Cloud C		10						
	Cloud D		6.6						
	Cloud E		10						
	Cloud F		13						
	Cloud G		14						



Video Projector about on level with mid rung of ladder - just above rear aud sightline (see dimension in green)
 Need to use "blanking" option to not clip top 0.2m of image on prosc
 Use "supplied lens"

