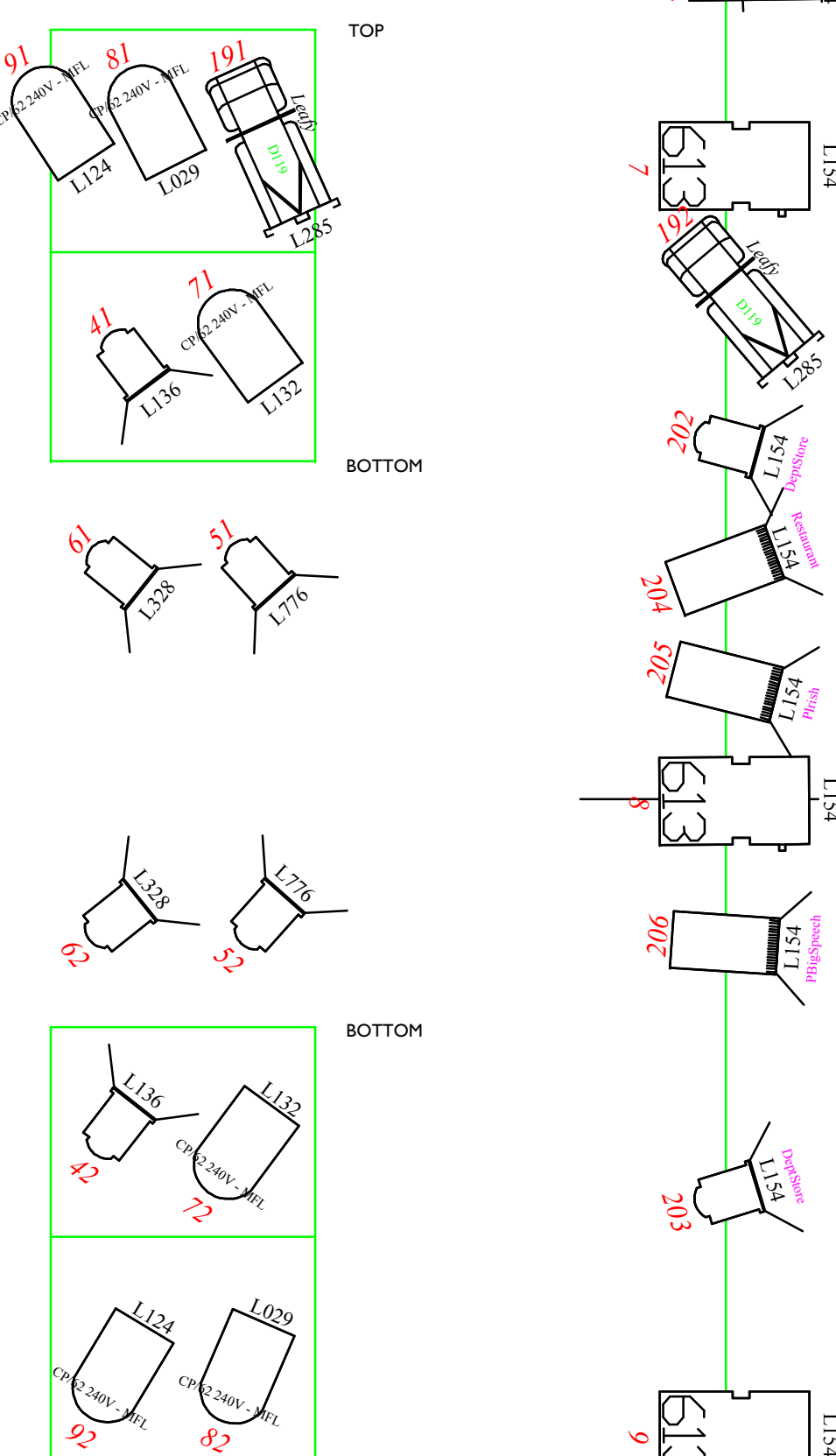
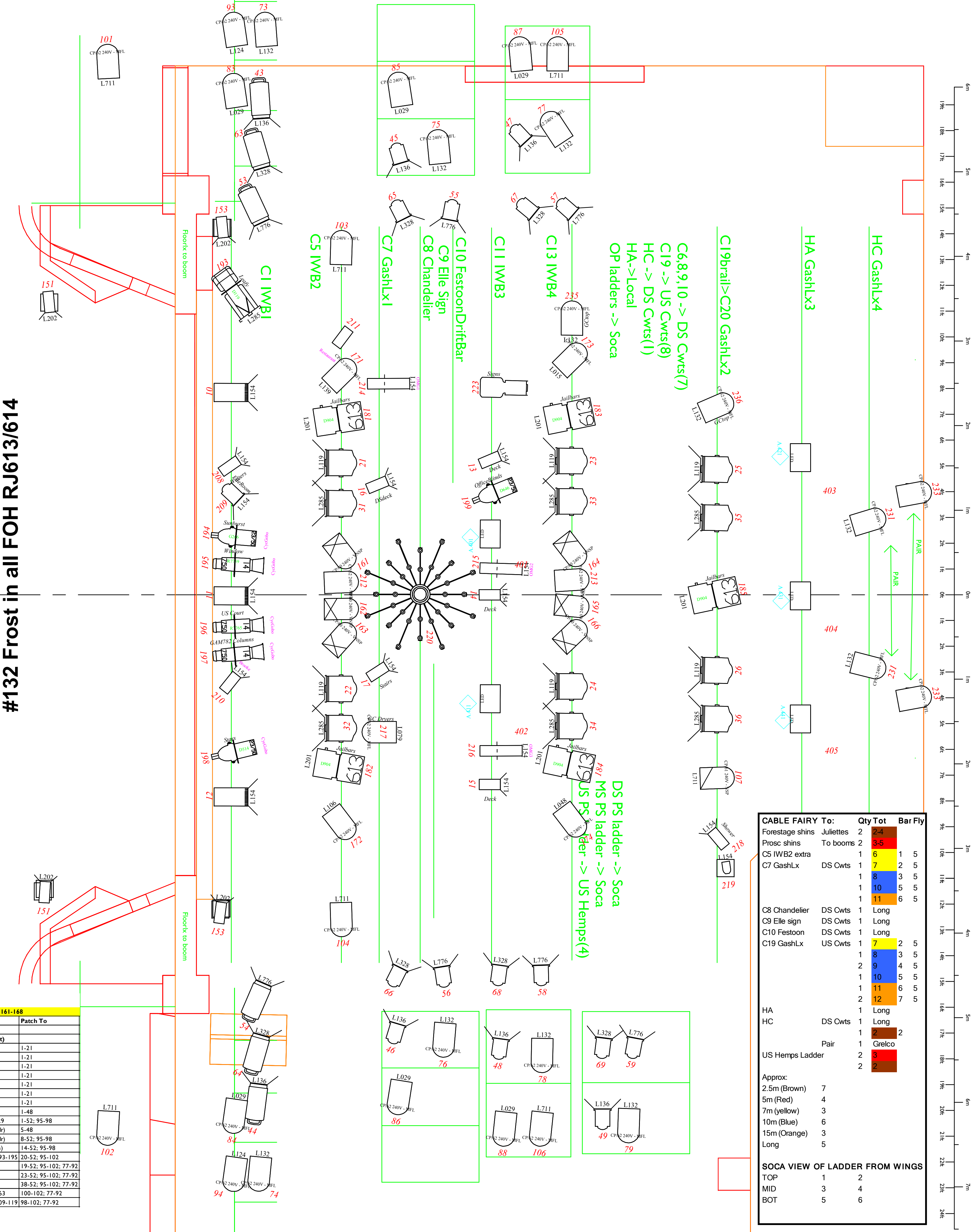


**RIG NOTES**  
 Haze half-way hems  
 Channel 501  
 DMX 501 1\_1111\_0101  
 Smoke machine  
 Upstage by treads  
 Ch 511  
 DMX 1\_1111\_1111  
 Use doughy boom arms  
 at top of prosc booms

Symbol	Name	Count	Lamp	Lens	Fixture Options
	614SX	6	T/29 230V		
	Spectra Cyc 200	5	LED		Personality: 608
	PAR 64	40	CP/62 240V - MFL		
	Strand Patt 243BP; 10 Inch Barndoor [1]	12	CP/41 230V		
	613SX	3	T/29 230V		
	Starlette 7°<38° PC; 185 x 190mm Barndoor [1]	6	T/19 230V		
	CE Source 4 750; B Size Gobo Holder [1]	3	HPL 750W/230V	14 Degree	
	Strand Lighting SL 23/50; B Size Gobo Holder [1]	3	GKV 230V		
	613SX; B Size Gobo Holder [1]	5	T/29 230V		
	Pacific 23<50° Zoom; B Size Gobo Holder [1]	3	GKV 230V		
	Minulette 17°<36° Profile	5	T/27 230V		
	Wrought Iron Chandelier	1	TU 150A1/P/BC		
	Minulette 18°<57° Fresnel	1	T/25 230V		
	Minulette 18°<57° Fresnel; 120mm Barndoor [1]	12	T/25 230V		
	PAR 16	1	M/61 - MR16FL		
	Starlette 6°<57° Fresnel; 185 x 190mm Barndoor [1]	24	T/19 230V		
	PAR 64	6	CP/60 240V - VNSP		
	Rama 150 PC; Rama 150/175 Barndoor [1]	6	T/19 230V		
	Strand Patt 23N	1	T/17 240V		
	PAR 64	1	CP/61 240V - NSP		



#132 Frost in all FOH RJ613/614



CABLE FAIRY To:	Qty Tot	Bar Fly
Forestage shins	2	2-4
Prosc shins	2	3-5
C5 IWB2 extra	1	6
C7 GashLx	DS Cwts	1 7 2 5
		1 8 3 5
		1 10 5 5
		1 11 6 5
C8 Chandelier	DS Cwts	1 Long
C9 Elle sign	DS Cwts	1 Long
C10 Festoon	DS Cwts	1 Long
C19 GashLx	US Cwts	1 7 2 5
		1 8 3 5
		2 9 4 5
		1 10 5 5
		1 11 6 5
		2 12 7 5
HA		1 Long
HC	DS Cwts	1 Long
		1 2 2
	Pair	1 Grelco
US Hems Ladder		2 3 2
		2 2 2

Approx:  
 2.5m (Brown) 7  
 5m (Red) 4  
 7m (yellow) 3  
 10m (Blue) 6  
 15m (Orange) 3  
 Long 5

SOCA VIEW OF LADDER FROM WINGS			
	TOP	MID	BOT
	1	2	
	3	4	
	5	6	

**adc theatre**  
 PARK STREET - CAMBRIDGE CB5 8AS - TELEPHONE (01223) 359547 - WEBSITE <http://www.adctheatre.com>

LX PLAN		SCALE 1:25 (A1) 1:50 (A3)	
PRODUCTION Legally Blonde	DATES 22nd May - 4th June 2016	COMPANY Festival Players	DESIGNER James Dowson
DIRECTOR James Dowson	DRAWN Eddy Langley	DATE Saturday May 21 2016	

ADC CAD Model maintained by Eddy Langley - <http://www.lampie.org/adc/>

**Check dimming (ignore actually allocation of circuits - use nearest)**

DMX	Controls	Feeds
1-52	2.5kW dimmer	Stage Patch
53-76	2.5kW dimmer	FOH Patch
77-92	2.5kW dimmer	Stage Patch
93	Dimmer	Houselights
94	Doesn't exist!	
95-102	5kW dimmer	Stage Patch
103-106	Switch circuit	Both Patches
107-108	Analogue +10V	1/4in jack, XLR
109-114	Ac66 Patch bay	for overstage
115-120	Ac66 Patch bay	for overstage
121-126	2.5kW dimmer	US Cwts Socapex
127-132	2.5kW dimmer	DS Cwts Socapex
133-138	2.5kW dimmer	US Hems Socapex
139-144	2.5kW dimmer	DS Hems Socapex
145-158	2.5kW dimmer	Bar Zero (PS->OP)
159-160	Switch circuit	Bar Zero (centre)
161-168	Cross patchbay	for overstage
169-192	Analogue +10V	25-way D
193-198	Ac66 Patch bay	for overstage

**FOH Exacty uses 53-76**

FOH Patch	Circuits (PS->OP)	Patch To
4 PS House light bar		All FOH Patch
4 OP House light bar		All FOH Patch
2 Lime box		All FOH Patch
4 Orchestra pit	53(pair)	All FOH Patch
2 Juliettes (1 each side)	75-76	All FOH Patch
4 Dome		All FOH Patch
8 PS sidebars	55-57	All FOH Patch
7 PS ladder	58-63	53-76
6 PS Patch	64	53-76
6 OP Patch	65	53-76
7 OP Ladder	66-71	53-76
8 OP Side bars	72-74	All FOH Patch

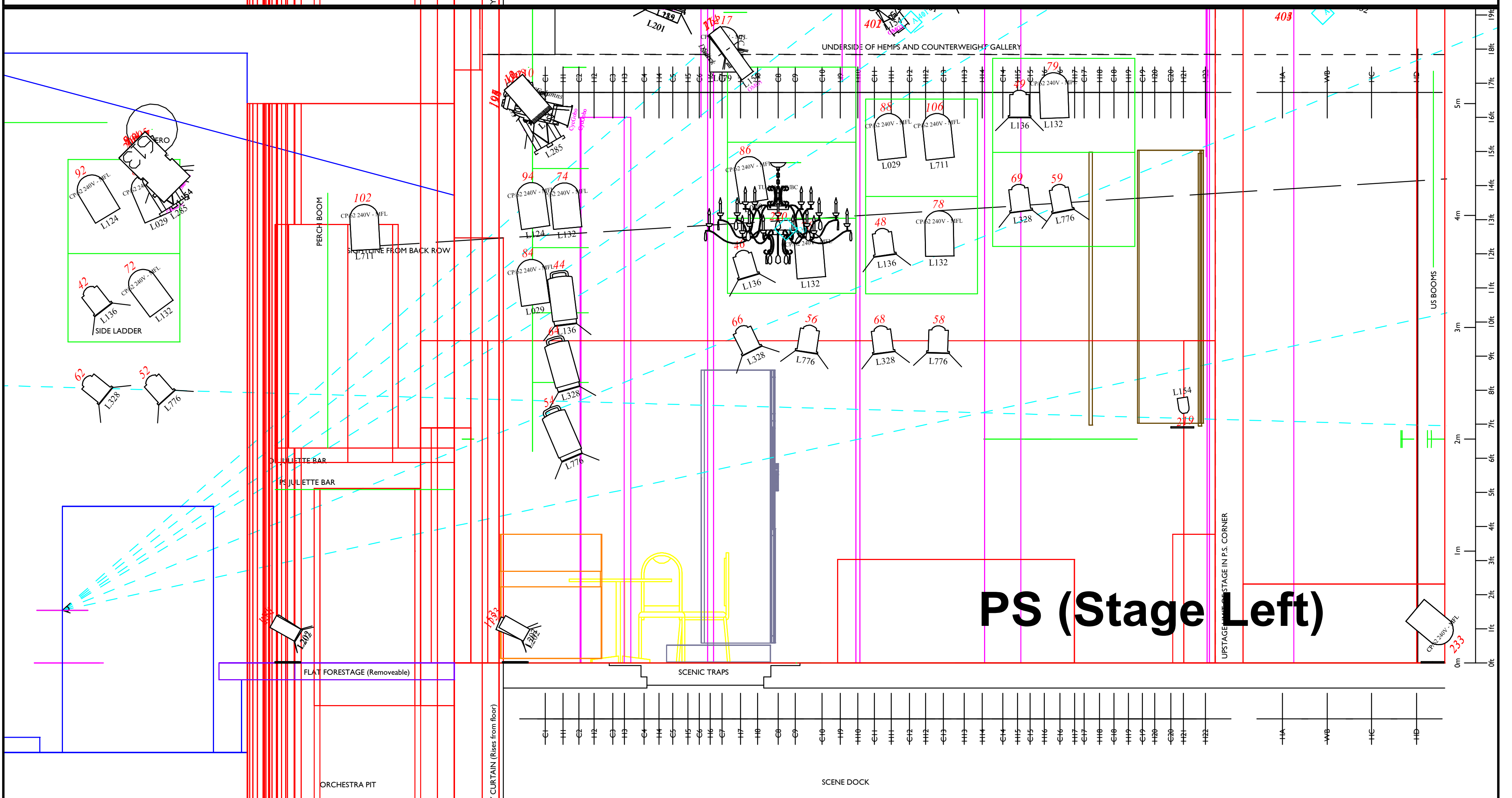
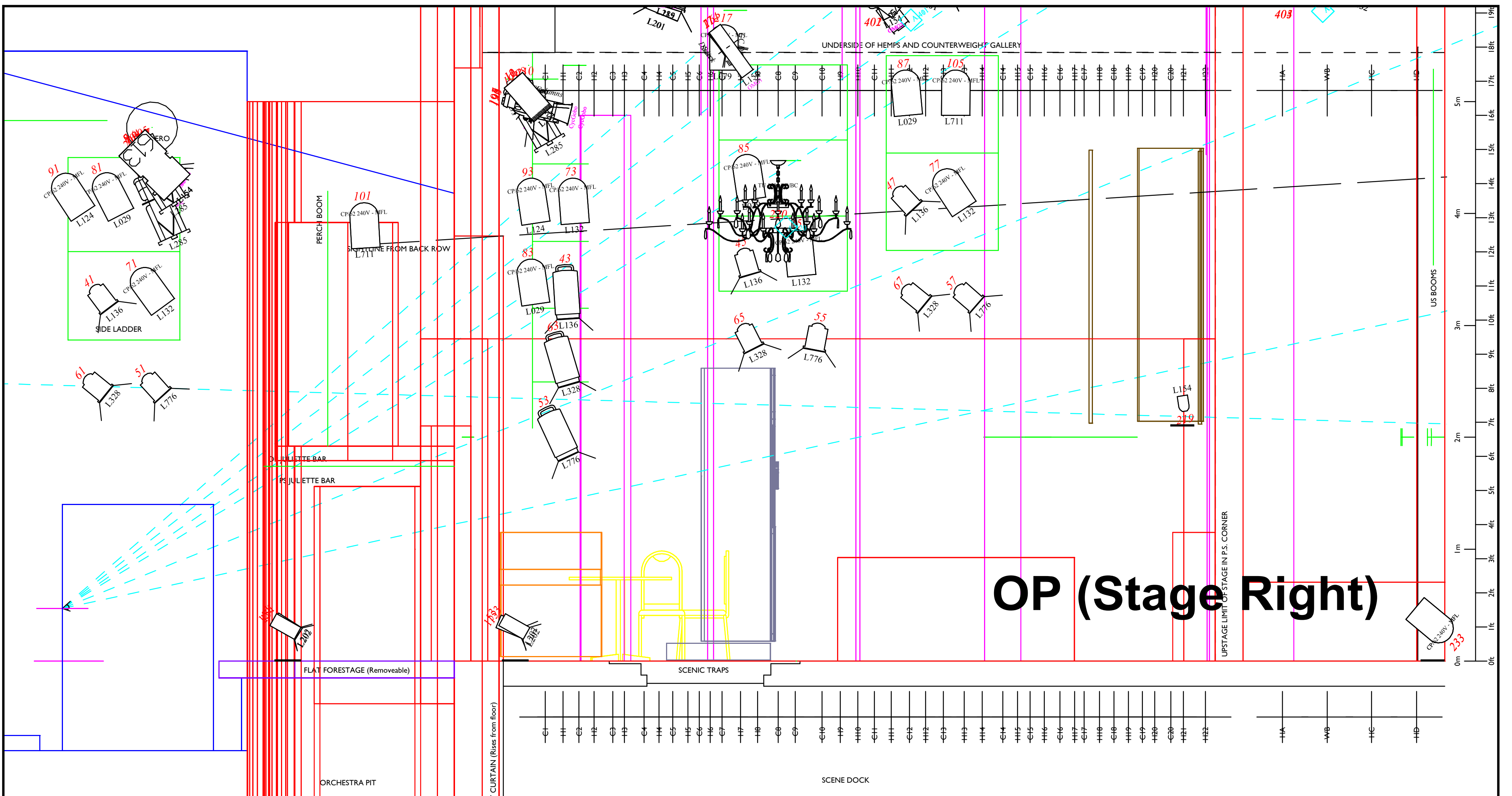
**Cables to 3x Act1 + Ch 161-168**

Stage Patch	Circuits (PS->OP) (Top->Bot)	Patch To
2 US OP Dips		1-21
3 DS OP Dips		1-21
3 MS OP Dips		1-21
3 US Dips	1	1-21
2 MS PS Dips		1-21
2 DS PS Dips		1-21
14 IWB1	2-13	1-48
14 IWB2	14-30;22-29	1-52; 95-98
8 OP Boom	30-37(mcFr)	5-48
8 PS Boom	38-44(mcFr)	8-52; 95-98
8 DS Cwts	45-51(gash)	14-52; 95-98
8 US Cwts	164-168;193-195	20-52; 95-102
6 DS Hems		19-52; 95-102; 77-92
4 MS Hems		23-52; 95-102; 77-92
14 IWB3	52;95-100	38-52; 95-102; 77-92
8 US Hems	120;161-163	100-102; 77-92
14 IWB4	101-102;109-119	98-102; 77-92
Birdie	196	
HC cans	197	

**Patch DMX universe 1 to IWB3 (cyc floods), hems gallery US (hazer), cwts gallery US (cyc floods) stage level (smoke machine)**

**NOTE: Dimmers 53-92 located in scene dock**  
**NOTE: By convention the houselights (dimmer 93) are soft patched to desk channel 200**





Position	CableTo	Rung	W (m)	H (m)	DS edge	BotRung
DS PS	Soca DS	4	1.15	2	H6	3.3m
MS PS	Soca US	3	1	1.73	H10	3.3m
US PS	US hemsps	3	1.27	1.68	H14	3.7m
DS OP	Soca DS	4	1.15	2	H6	3.3m
MS OP	Soca US	3	1	1.73	H10+0.25	3.7m

CABLE FAIRY To:	Qty Tot	Bar Fly
Forestage shins	Juliettes 2	2-4
Prosc shins	To booms 2	3-5
C5 IWB2 extra	1	6
C7 GashLx	DS Cwts 1	7
	1	8
	1	10
	1	11
C8 Chandelier	DS Cwts 1	Long
C9 Elle sign	DS Cwts 1	Long
C10 Festoon	DS Cwts 1	Long
C19 GashLx	US Cwts 1	7
	1	8
	2	9
	1	10
	1	11
	2	12
HA	1	Long
HC	DS Cwts 1	Long
	Pair 1	2
US Hemsps Ladder	2	3
	2	2

Subtract 1cm for pipe clip	Bar	Cloth	Cloth
C1 IWB1		5.32	
C5 IWB2		6.39	
C6 Border		7.32	2.44
C7 GashLx1		5.81	
H9 border		7.65 (2.44,5.21)	2.44
C11 IWB3		6.36	
C13 IWB4		6.57	
H18 Border		8.58 (2.44,6.14)	2.44
C19 GashLx2		7.27	
HA GashLx3		6.42	
HC GashLx4		6.42	

**Check dimming (ignore actual allocation of circuits - use nearest)**

DMX	Controls	Feeds	FOH Patch	Circuits	Patch To
1-52	2.5kW dimmer	Stage Patch	4 PS House light bar	All FOH Patch	
53-76	2.5kW dimmer	FOH Patch	4 OP House light bar	All FOH Patch	
77-92	2.5kW dimmer	Stage Patch	2 Line box	All FOH Patch	
93	Dimmer	Houselights	4 Orchestra pit	53(pair)	All FOH Patch
94	Doesn't exist!		2 Juliettes (1 each side)	75-76	All FOH Patch
95-102	5kW dimmer	Stage Patch	4 Dome	All FOH Patch	
103-106	Switch circuit	Both Patches	8 PS sidebars	55-57	All FOH Patch
107-108	Analogue +10V	1/4in jck, XLR	7 PS ladder	58-63	53-76
109-114	Act6 Patch bay	for overstage	6 PS Perch	64	53-76
115-120	Act6 Patch bay	for overstage	6 OP Perch	65	53-76
121-126	2.5kW dimmer	US Cwts Socapex	7 OP Ladder	66-71	53-76
127-132	2.5kW dimmer	DS Cwts Socapex	8 OP Side bars	72-74	All FOH Patch
133-138	2.5kW dimmer	US Hemp Socapex			
139-144	2.5kW dimmer	DS Hemp Socapex			
145-158	2.5kW dimmer	Bar Zero (PS->OP)			
159-160	Switch circuit	Bar Zero (centre)			
161-168	Cross patchbay	for overstage			
169-192	Analogue +10V	25-way D			
193-198	Act6 Patch bay	for overstage			

**NOTE:** Dimmers 53-92 located in scene dock  
**NOTE:** By convention the houselights (dimmer 93) are soft patched to desk channel 200

Stage Patch	Circuits	Patch To
2 US OP Dips	(PS->OP)	1-21
3 DS OP Dips	(PS->OP)	1-21
3 MS OP Dips	(PS->OP)	1-21
3 US Dips	(PS->OP)	1-21
2 MS PS Dips	(PS->OP)	1-21
2 DS PS Dips	(PS->OP)	1-21
2 US PS Dips	(PS->OP)	1-21
14 IWB1	2-13	1-48
14 IWB2	14-2022-29	1-52; 95-98
8 OP Boom	30-37(mcFr)	5-48
8 PS Boom	38-44(mcFr)	8-52; 95-98
8 DS Cwts	45-51(gash)	14-52; 95-98
8 US Cwts	164-168;193-195	20-52; 95-102
6 DS Hemsps		19-52; 95-102; 77-92
4 MS Hemsps		23-52; 95-102; 77-92
14 IWB3	52,95-100	38-52; 95-102; 77-92
8 US Hemsps	120,161-163	100-102; 77-92
14 IWB4	101-102,109-119	98-102; 77-92
Birdie	196	
HC cans	197	

**RIG NOTES**

Haze half-way hemsps  
 Channel 501  
 DMX 501\_1\_1111\_0101

Smoke machine  
 Upstage by treads  
 Ch 511  
 DMX 1\_1111\_1111

Use doughy boom arms  
 at top of prosc booms

SOCA VIEW OF LADDER FROM WINGS	TOP	MID	BOT
	1	2	2
	3	4	4
	5	6	6







PARK STREET - CAMBRIDGE CB5 8AS - TELEPHONE (01223) 359547 - WEBSITE <http://www.adctheatre.com>

<b>LX PLAN</b>		<b>SCALE 1:25 (A1) 1:50 (A3)</b>	
PRODUCTION Legally Blonde	DATES 22nd May - 4th June 2016	COMPANY Festival Players	
DIRECTOR James Dowson	DESIGNER		
LIGHTING DESIGNER Eddy Langley / Rob Loxley	DRAWN Eddy Langley	DATE Saturday May 21 2016	

ADC CAD Model maintained by Eddy Langley - <http://www.lampie.org/adc/>

	Bar	Cloth	Cloth
Subtract 1cm for pipe clip			
C1 IWB1	5.32		
C5 IWB2	6.39		
C6 Border	7.32	2.44	
C7 GashLx1	5.81		
H9 border	7.65 (2.44,5.21)	2.44	
C11 IWB3	6.36		
C13 IWB4	6.57		
H18 Border	8.58 (2.44,6.14)	2.44	
C19 GashLx2	7.27		
HA GashLx3	6.42		
HC GashLx4	6.42		
Subtract 1cm for pipe clip			

